



2021 Hoti Product Catalogue

Hoti(Xiamen)Plumbing.Inc

No.4 Bldg.No 2002 Tongjizong road, Tong'an district, Xiamen, China

PC:361100

Tel:+(86) 592-3101000

Email: Alice@hotiplumbing.com

www.cnhoti.com

for quality & service, we do



CONTENTS

About Hoti	03
UF Toilet Seat/Duroplast Toilet Seat	17
D-Shape	18
O-Shape	22
V-Shape	27
Square Shape	32
Family Baby Seat	38
PP Toilet Seat	40
D-Shape	41
O-Shape	41
V-Shape	42
Square Shape	45
Family Baby Seat	46
Manual Bidet	47
Innovations	49
Hoti Quick Release Hinge System	57
Hinge & Damper	63



About Hoti

Founded in 2008, Hoti Group is a high-tech enterprise specialized in providing customers with high-end smart toilet, smart toilet seat, WC toilet seat and toilet seat solutions.

Hoti Sanitary is operating under Hoti Group, which always sticks to the mission, “For service and quality, we do!” After more than 12 years of development, Hoti sanitary has now obtained over 20 domestic invention patents, and many overseas inventions and utility patents, and is equipped with advanced intelligent manufacturing equipment, first-class management and a professional R&D team. With R&D team’s development, we have developed new materials like PBT, PP+BaSo4, as well as the new dual injection crystal toilet seat.

In year 2020, Hoti has successfully purchased the land as the new Industrial Park for its factory expansion plan. Hoti has become the most reliable and professional strategic partner for the top bathroom brands. Hoti Design and Manufacturing Center supports our top bathroom brand customers worldwide in a leading position of various markets. Hoti focus on bringing value to our customers, our employees and our shareholders.

In Sanitary industry, Hoti is the first one to introduce one stand workshop for products automatic manufacturing process, and bring the ABB automatic robot arms during our production process. Currently all the manufacturing machines are equipped with automatic ABB robot machines. The new industrial zone is designed based on the concept of “Industry 4.0”, and will consolidate the smart production from the beginning of purchase of the supply chain to the shipment arrangement process.

New Plant

Hoti New Plant will be completed at the end of Year 2023.



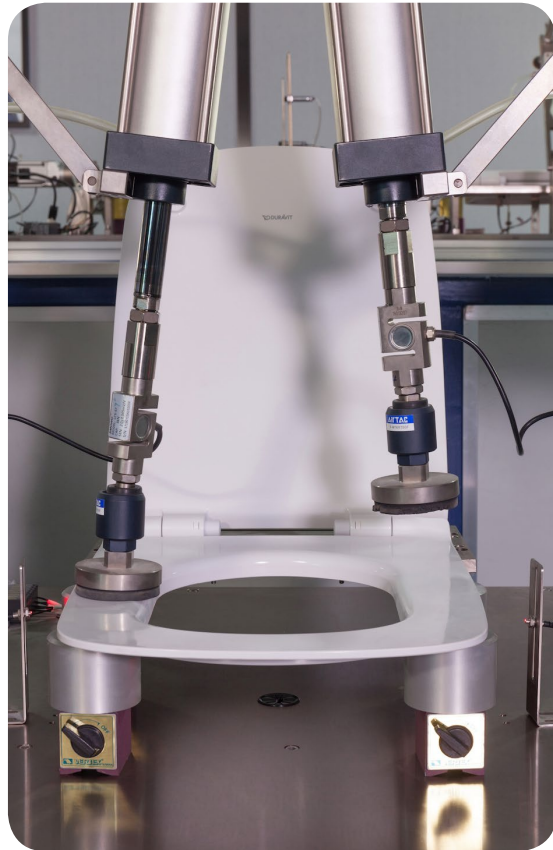
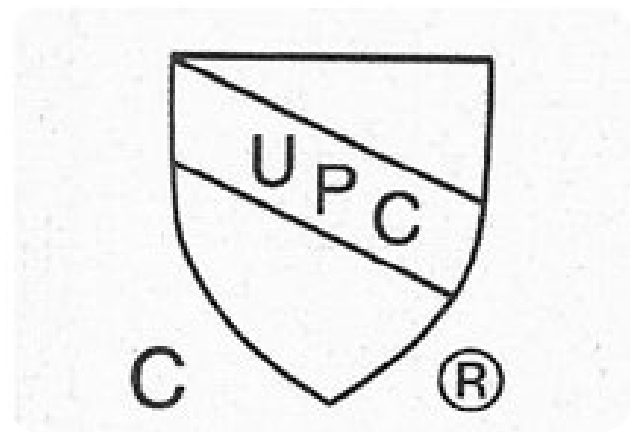
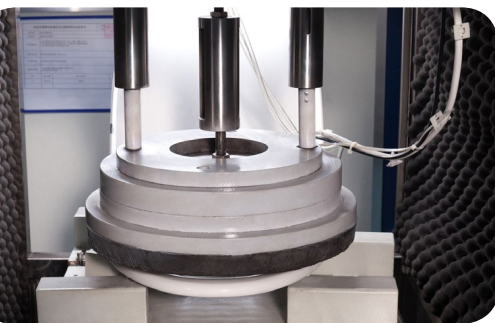
Manufacturing

Hoti Group is an automated, intelligent facility equipped company, has always committed to the mission that build the most advanced automated toilet seat factory. Hoti Group has fully utilized the advanced intelligent manufacturing equipment, combining with the IT system ERP, MES and etc. Hoti's new manufacturing plants is planned to be built based on the Industry 4.0 so to establish the intelligent benchmark manufacturer in the sanitary industry.



Lab

Hoti Group Lab is built based on the DIN standard, and has a perfect quality assurance system for quality, safety and environment, and has national-level certification laboratories—CSA, CNAS, IAPMO, and a sound global product certification system.



Innovation & Patent

Hoti Group always sticks to the mission, "For service and quality, we do!". After more than 12 years of development, Hoti has now obtained over 100 domestic invention patents, and many overseas inventions and utility patents in German, France and Great Britain. It has become the most reliable and professional strategic partner for the top bathroom brands all over the world.



Hoti Factory



Our PP & UF Products Strength

For the products, we always think that a good product should be based on design, manufacturing process control and follow-up product testing.

Design leads to the good product. We apply these to all our models. From the very beginning we strictly analyze the product structure by mold flow analysis for PP, and thickness analysis for UF item, so as to make sure that the product's performance is steady. Meanwhile we always strictly adhere to the user friendly parts design; we know that the minor issue always matters. So we design user-friendly bumpers in our products. Due to different markets have different quality requirement, we design the items and make sure that the items could pass the different standards from different markets, like NF, DIN standard.

Strict manufacturing process control is also necessary; we control the manufacturing process from the material inspection (like material moisture inspection, material fluidity inspection) so as to make sure that the materials are of good quality. Besides, the material is also kept in the air-conditioned storage environment. Advanced machines also assist in the good quality product. Hoti is the first one to bring in the one-stop station both for the UF & PP products, automatic production lines enables auto preheating and feeding UF material automatically. And micro-computer could show the mold temperature, so as to make sure that the products are manufactured in very steady temperatures, to ensure the steady product quality.

FOR QUALITY & SERVICE, WE DO

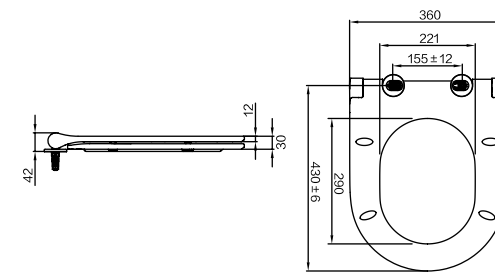


UF Toilet Seat

Duroplast Toilet Seat

D-Shape

NO.A346



A:155±12mm B:430±6mm

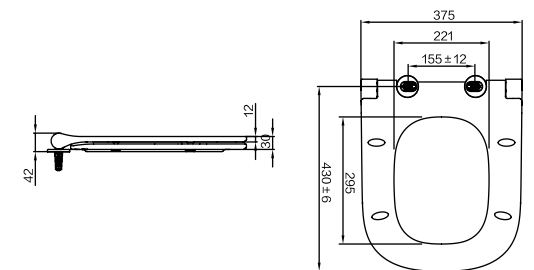
PRODUCT FEATURES

- UF Material, D-Shape, 2.1kg
- Soft-close and Non soft-close function alternative
- No button 90 degree quick release
- Top/Bottom fixing installation alternative



Square shape

NO.A347



A:155±12mm B:430±6mm

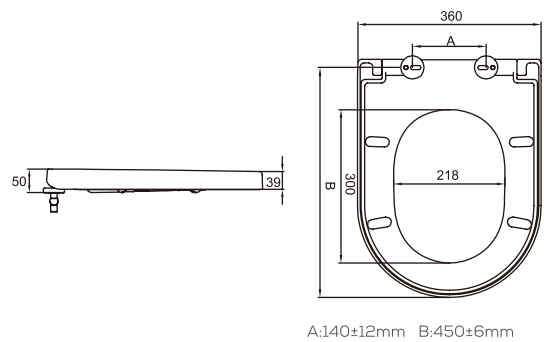
PRODUCT FEATURES

- UF Material, Square-Shape, 2.3kg
- Soft-close and Non soft-close function alternative
- Any degree quick release
- Top/Bottom fixing installation alternative



D-Shape

NO.A201

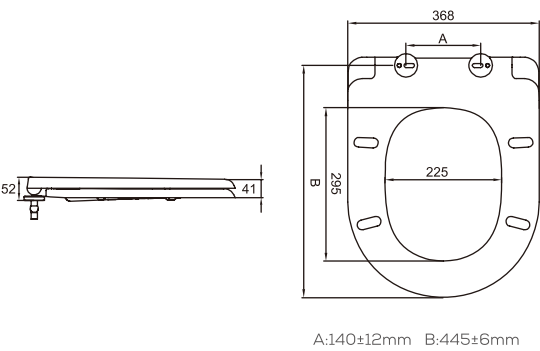


PRODUCT FEATURES

- UF Material, D Shape, 2.9kg
- Soft-close and Non soft-close function alternative
- Two press button quick release hinge system
- Top/Bottom fixing installation alternative
- Applicable for European standard D-shape ceramic bowl.

D-Shape

NO.A204

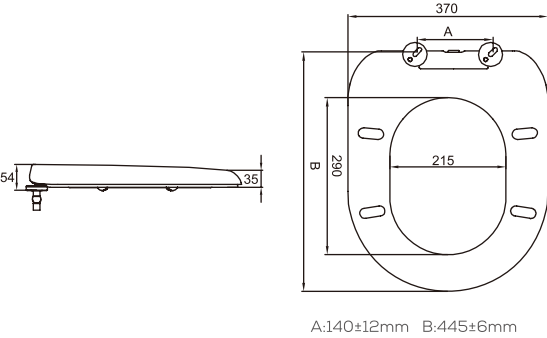


PRODUCT FEATURES

- UF Material, D Shape, 2.7kg
- Soft-close and Non soft-close function alternative
- Two press button quick release hinge system
- Top/Bottom fixing installation alternative
- Applicable for European standard D-shape ceramic bowl.

D-Shape

NO.A207

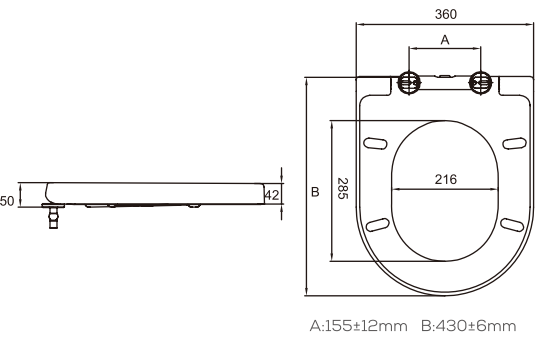


PRODUCT FEATURES

- UF Material, D Shape, 2.0kg
- Soft-close and Non soft-close function alternative
- One press button quick release hinge system
- Top/Bottom fixing installation alternative

D-Shape

NO.A262

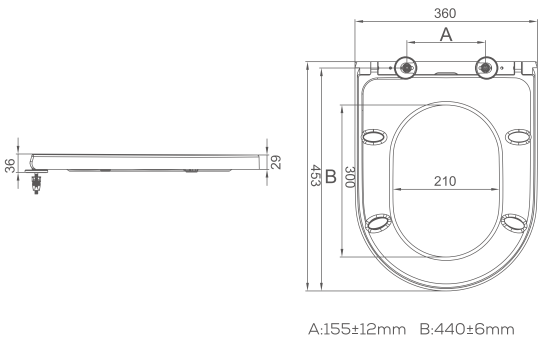


PRODUCT FEATURES

- UF Material, D Shape, 2.4kg
- Soft-close and Non soft-close function alternative
- One press button quick release hinge system
- Top/Bottom fixing installation alternative
- Applicable for European standard D-shape ceramic bowl.

D-Shape

NO.A277



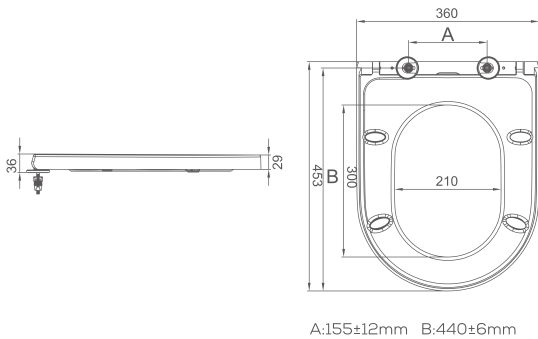
PRODUCT FEATURES

- UF Material,D-Shape, 2.5kg
- Soft-close and Non soft-close function alternative
- One press button quick release hinge system
- Top/Bottom fixing installation alternative
- Applicable for European Standard D-shape ceramic bowl.



D-Shape

NO.A285



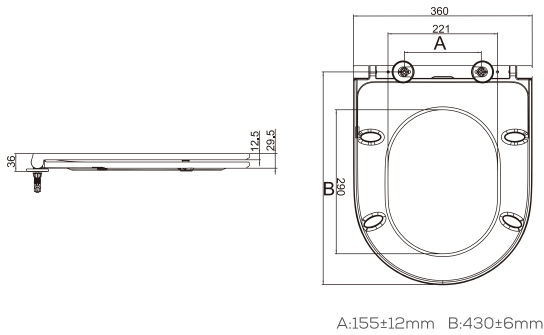
PRODUCT FEATURES

- UF Material, D-Shape, 2.9kg
- Soft-close and Non soft-close function alternative
- No button 90 degree quick release
- Top/Bottom fixing installation alternative
- Applicable for European Standard D-shape ceramic bowl.



D-Shape

NO.A297



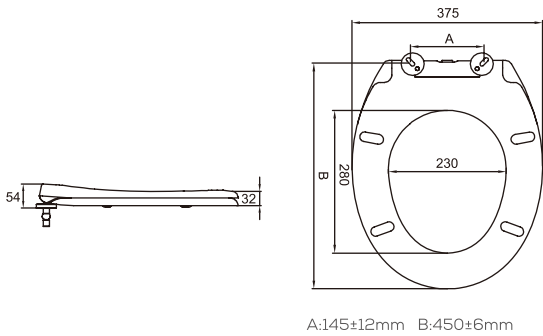
PRODUCT FEATURES

- UF Material,D-Shape, 2.4kg
- Soft-close and Non soft-close function alternative
- One press button quick release hinge system
- Top/Bottom fixing installation alternative
- Applicable for European Standard D-shape ceramic bowl.



O-Shape

NO.A215



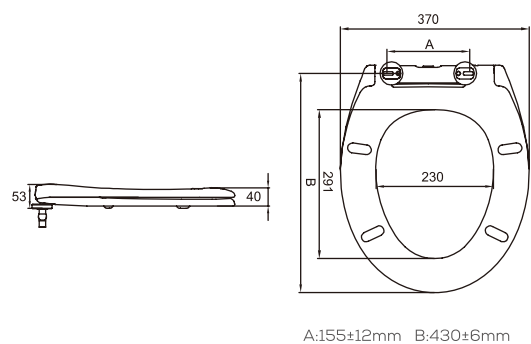
PRODUCT FEATURES

- UF Material, O Shape, 2.1kg
- Soft-close and Non soft-close function alternative
- One press button quick release hinge system
- Top/Bottom fixing installation alternative
- Applicable for European standard O-shape ceramic bowl.



O-Shape

NO.A227



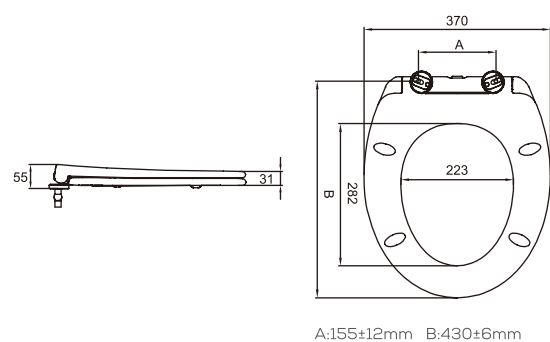
PRODUCT FEATURES

- UF Material, O Shape, 2.5kg
- Soft-close and Non soft-close function alternative
- One press button quick release hinge system
- Top/Bottom fixing installation alternative
- Applicable for European standard O-shape ceramic bowl.



O-Shape

NO.A260



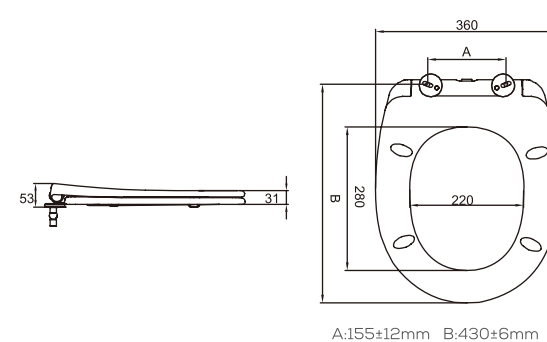
PRODUCT FEATURES

- UF Material, O Shape, 2.3kg
- Soft-close and Non soft-close function alternative
- One press button quick release hinge system
- Top/Bottom fixing installation alternative
- Applicable for European standard O-shape ceramic bowl.



O-Shape

NO.A261



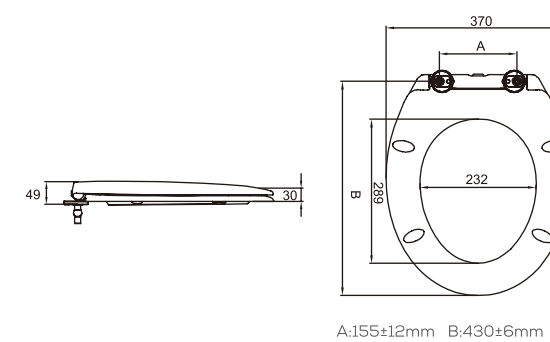
PRODUCT FEATURES

- UF Material, O Shape, 2.2kg
- Soft-close and Non soft-close function alternative
- One press button quick release hinge system
- Top/Bottom fixing installation alternative
- Applicable for European standard O-shape ceramic bowl.



O-Shape

NO.A265



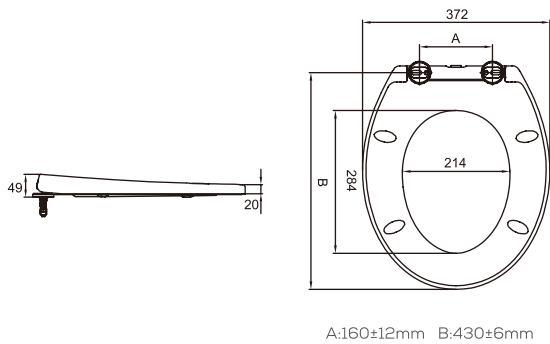
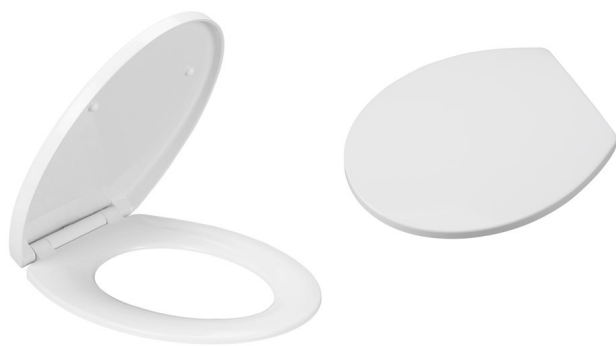
PRODUCT FEATURES

- UF Material, O Shape, 2.0kg
- Soft-close and Non soft-close function alternative
- One press button quick release hinge system
- Top/Bottom fixing installation alternative
- Applicable for European standard O-shape ceramic bowl.



O-Shape

NO.A268



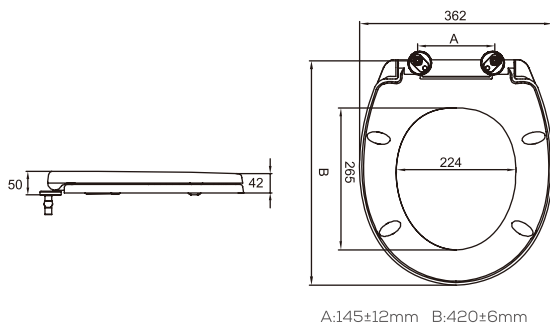
PRODUCT FEATURES

- UF Material, O Shape, 2.1kg
- Soft-close and Non soft-close function alternative
- One press button quick release hinge system
- Top/Bottom fixing installation alternative
- Applicable for European standard O-shape ceramic bowl.



O-Shape

NO.A283



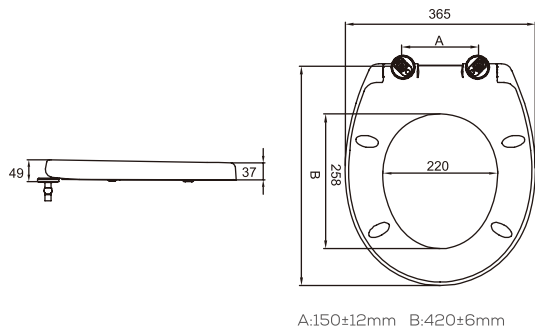
PRODUCT FEATURES

- UF Material, O Shape, 2.5kg
- Soft-close and Non soft-close function alternative
- Two press button quick release hinge system
- Top/Bottom fixing installation alternative
- Applicable for American standard ceramic bowl.



O-Shape

NO.A289



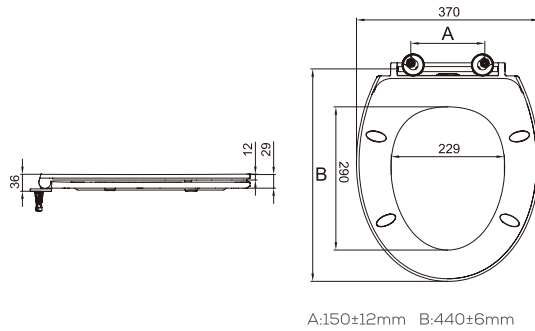
PRODUCT FEATURES

- UF Material, O Shape, 2.4kg
- Soft-close and Non soft-close function alternative
- Two press button quick release hinge system
- Top/Bottom fixing installation alternative
- Applicable for American standard ceramic bowl.



O-Shape

NO.A312



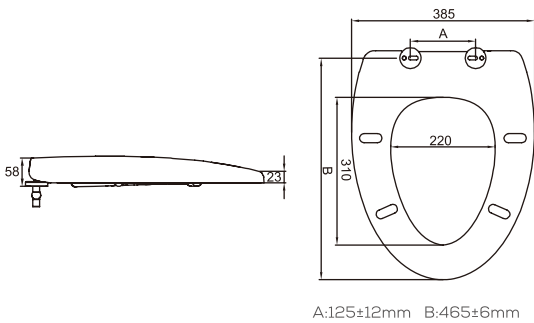
PRODUCT FEATURES

- UF Material, O-Shape, 2.3kg
- Soft-close and Non soft-close function alternative
- One press button quick release hinge system
- Top/Bottom fixing installation alternative
- Applicable for European Standard O-shape ceramic bowl.



V-Shape

NO.A205



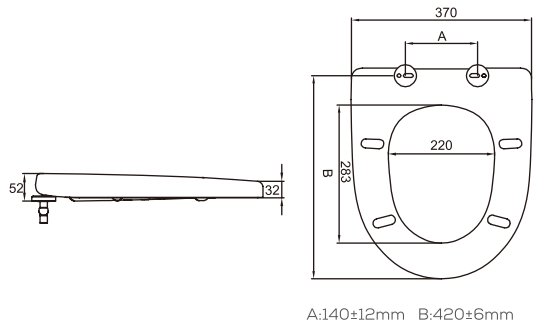
PRODUCT FEATURES

- UF Material, V Shape, 2.8kg
- Soft-close and Non soft-close function alternative
- Two press button quick release hinge system
- Top/Bottom fixing installation alternative



V-Shape

NO.A214



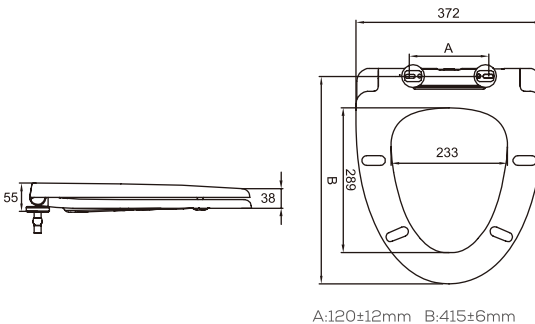
PRODUCT FEATURES

- UF Material, V Shape, 2.8kg
- Soft-close and Non soft-close function alternative
- Two press button quick release hinge system
- Top/Bottom fixing installation alternative



V-Shape

NO.A218



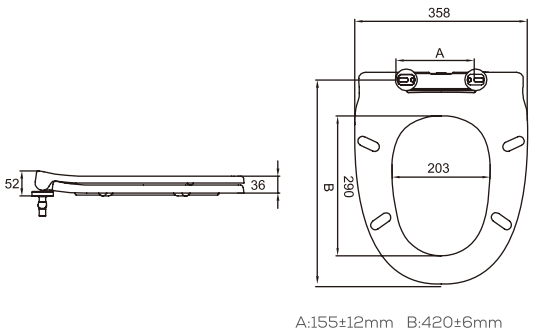
PRODUCT FEATURES

- UF Material, V Shape, 2.6kg
- Soft-close and Non soft-close function alternative
- One press button quick release hinge system
- Top/Bottom fixing installation alternative



V-Shape

NO.A228



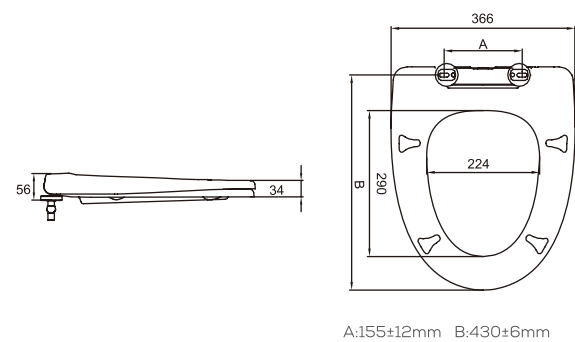
PRODUCT FEATURES

- UF Material, V Shape, 2.5kg
- Soft-close and Non soft-close function alternative
- One press button quick release hinge system
- Top/Bottom fixing installation alternative



V-Shape

NO.A229



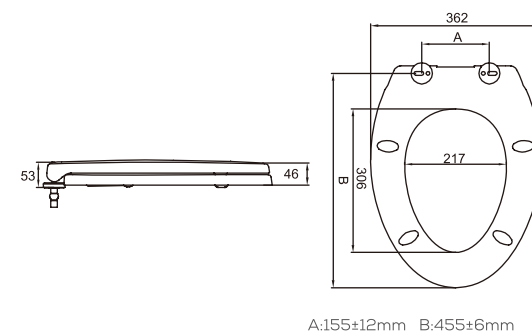
PRODUCT FEATURES

- UF Material, V Shape, 2.7kg
- Soft-close and Non soft-close function alternative
- One press button quick release hinge system
- Top/Bottom fixing installation alternative
- Applicable for American Elongated ceramic bowl.



V-Shape

NO.A236



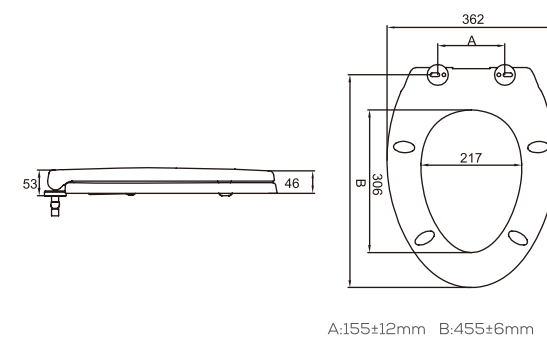
PRODUCT FEATURES

- UF Material, V Shape, 2.8kg
- Soft-close and Non soft-close function alternative
- Two press button quick release hinge system
- Top/Bottom fixing installation alternative
- Applicable for American Elongated ceramic bowl.



V-Shape

NO.A237



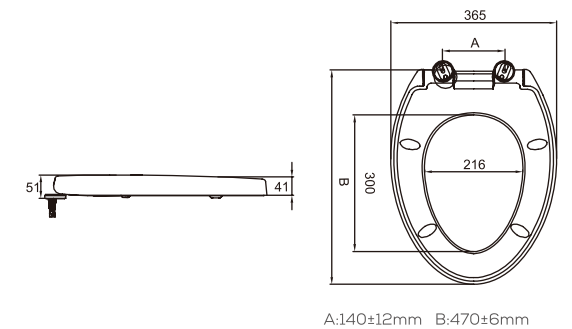
PRODUCT FEATURES

- UF Material, V Shape, 2.8kg
- Soft-close and Non soft-close function alternative
- Two press button quick release hinge system
- Top/Bottom fixing installation alternative
- Applicable for American Elongated ceramic bowl.



V-Shape

NO.A293



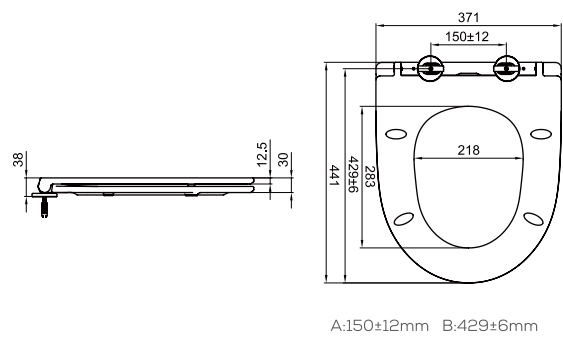
PRODUCT FEATURES

- UF Material, V Shape, 2.8kg
- Soft-close and Non soft-close function alternative
- Two press button quick release hinge system
- Top/Bottom fixing installation alternative



V-Shape

NO.A333



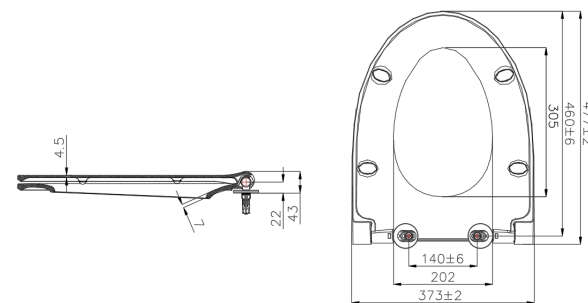
PRODUCT FEATURES

- UF Material, V Shape, 2.3kg
- Soft-close and Non soft-close function alternative
- Two press button quick release hinge system
- Top/Bottom fixing installation alternative



V-Shape

NO.A371



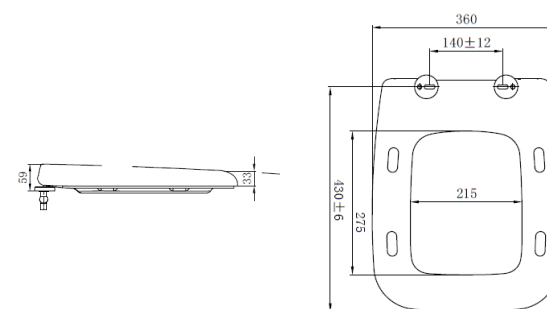
PRODUCT FEATURES

- UF Material, V-Shape, 2.3kg
- Soft-close and Non soft-close function alternative
- 90 degree quick release hinge system
- Top/Bottom fixing installation alternative
- Applicable for American V-shape ceramic bowl.



Square shape

NO.A220



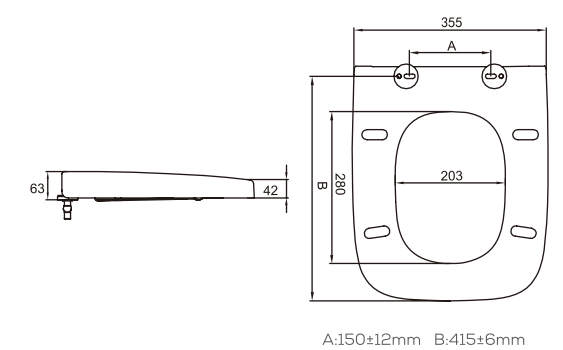
PRODUCT FEATURES

- UF Material, Square Shape, 2.7kg
- Soft-close and Non soft-close function alternative
- Two press button quick release hinge system
- Top/Bottom fixing installation alternative



Square shape

NO.A234



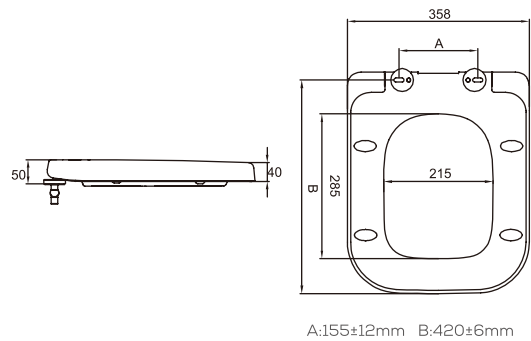
PRODUCT FEATURES

- UF Material, Square Shape, 2.7kg
- Soft-close and Non soft-close function alternative
- Two press button quick release hinge system
- Top/Bottom fixing installation alternative



Square shape

NO.A238



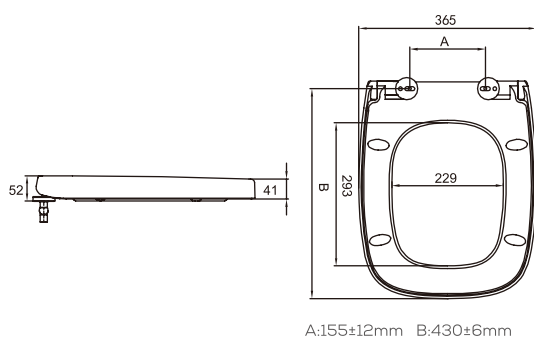
PRODUCT FEATURES

- UF Material, Square Shape, 2.8kg
- Soft-close and Non soft-close function alternative
- Two press button quick release hinge system
- Top/Bottom fixing installation alternative



Square shape

NO.A256



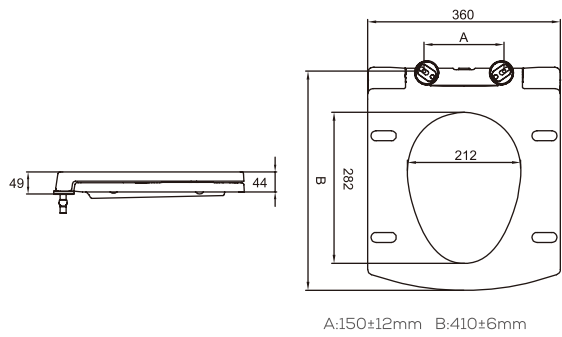
PRODUCT FEATURES

- UF Material, Square Shape, 2.8kg
- Soft-close and Non soft-close function alternative
- Two press button quick release hinge system
- Top/Bottom fixing installation alternative



Square shape

NO.A263



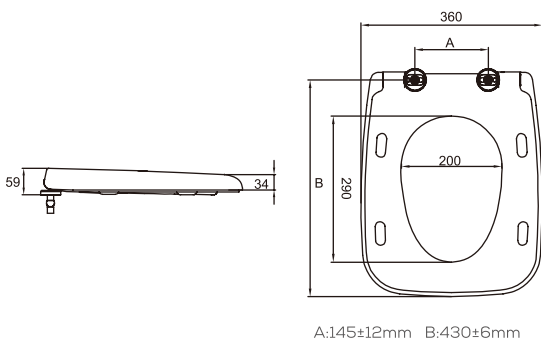
PRODUCT FEATURES

- UF Material, SquareShape, 2.3kg
- Soft-close and Non soft-close function alternative
- One press button quick release hinge system
- Top/Bottom fixing installation alternative



Square shape

NO.A266



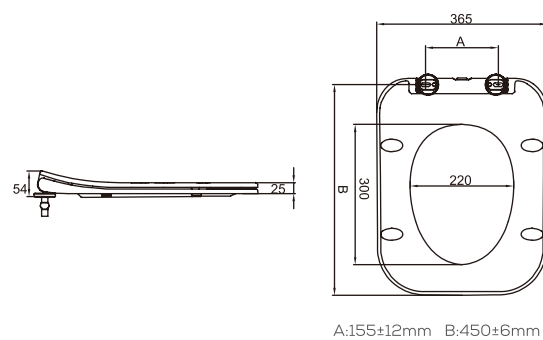
PRODUCT FEATURES

- UF Material, Square Shape, 2.9kg
- Soft-close and Non soft-close function alternative
- Two press button quick release hinge system
- Top/Bottom fixing installation alternative



Square shape

NO.A267



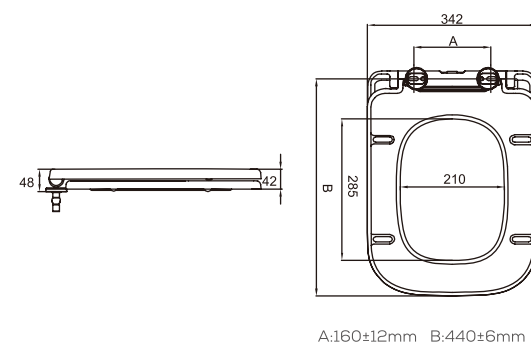
PRODUCT FEATURES

- UF Material, SquareShape, 2.6kg
- Soft-close and Non soft-close function alternative
- One press button quick release hinge system
- Top/Bottom fixing installation alternative



Square shape

NO.A269



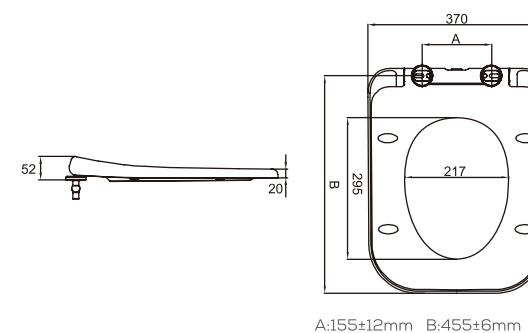
PRODUCT FEATURES

- UF Material, Square Shape, 2.3kg
- Soft-close and Non soft-close function alternative
- One press button quick release hinge system
- Top/Bottom fixing installation alternative



Square shape

NO.A272



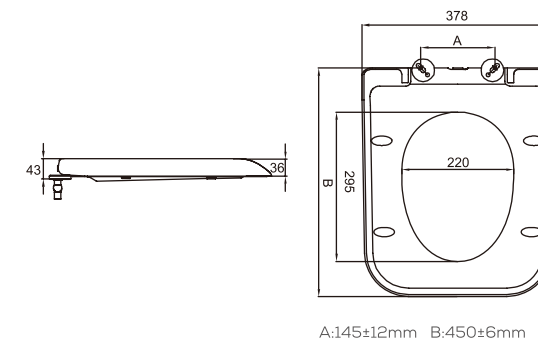
PRODUCT FEATURES

- UF Material, Square Shape, 2.8kg
- Soft-close and Non soft-close function alternative
- One press button quick release hinge system
- Top/Bottom fixing installation alternative



Square shape

NO.A273



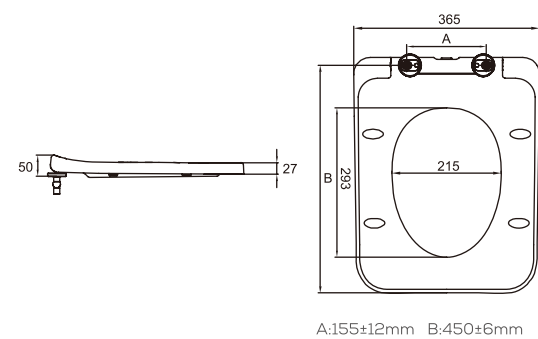
PRODUCT FEATURES

- UF Material, Square Shape, 2.7kg
- Soft-close and Non soft-close function alternative
- One press button quick release hinge system
- Top/Bottom fixing installation alternative



Square shape

NO.A291



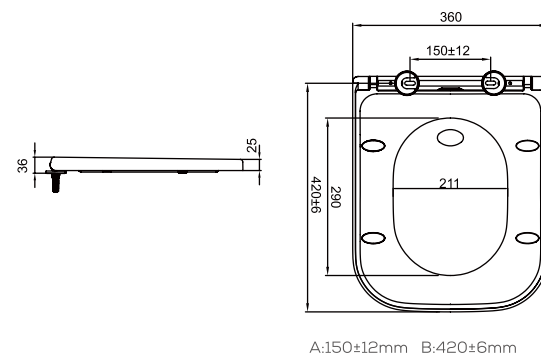
PRODUCT FEATURES

- UF Material, Square Shape, 2.8kg
- Soft-close and Non soft-close function alternative
- One press button quick release hinge system
- Top/Bottom fixing installation alternative



Square shape

NO.A309



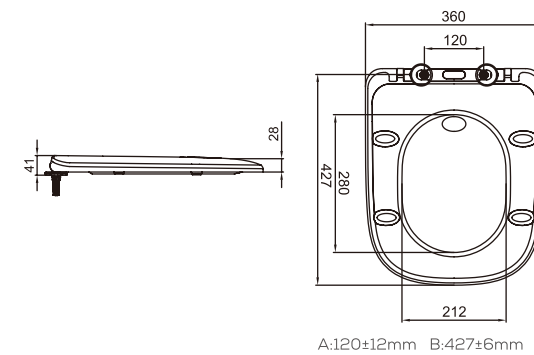
PRODUCT FEATURES

- UF Material, Square Shape, 2.4kg
- Soft-close and Non soft-close function alternative
- One press button quick release hinge system
- Top/Bottom fixing installation alternative



Square shape

NO.A310



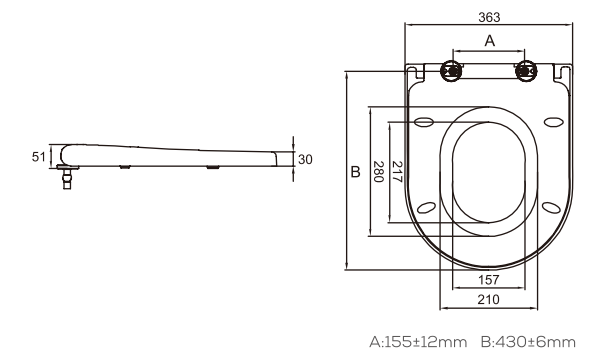
PRODUCT FEATURES

- UF Material, Square Shape, 2.1kg
- Soft-close and Non soft-close function alternative
- One press button quick release hinge system
- Top/Bottom fixing installation alternative



Family Baby Seat

NO.A285B



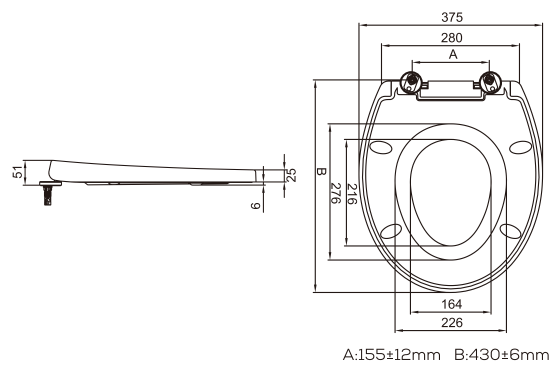
PRODUCT FEATURES

- UF Material, D-Shape, 3.4kg
- Soft-close and Non soft-close function alternative
- No button 90 degree quick release
- Top/Bottom fixing installation alternative
- Applicable for European Standard D-shape ceramic bowl.



Family Baby Seat

NO.A296B



PRODUCT FEATURES

- UF Material,O-Shape, 2.9kg
- Soft-close and Non soft-close function alternative
- No button 90 degree quick release
- Top/Bottom fixing installation alternative
- Applicable for European Standard O-shape ceramic bowl.

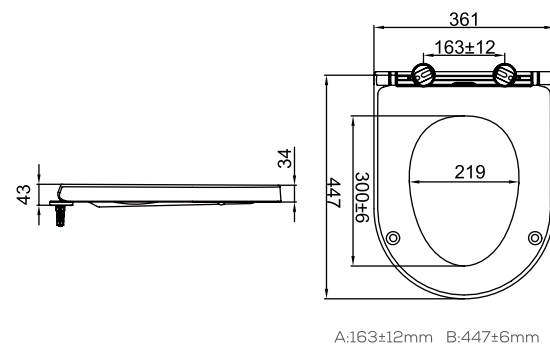


PP Toilet Seat



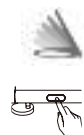
D-Shape

 NO.A655



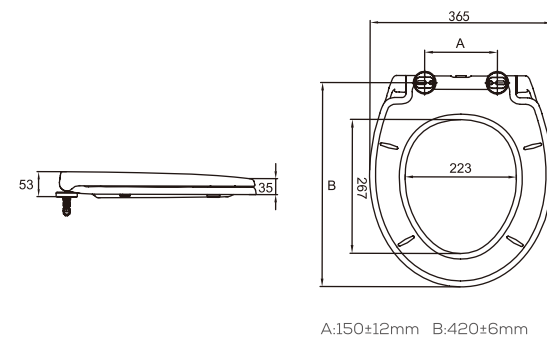
PRODUCT FEATURES

- PP Material, D Shape, 1.7kg
- Soft-close and Non soft-close function alternative
- One press button quick release hinge system
- Top/Bottom fixing installation alternative



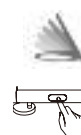
O-Shape

 NO.A620



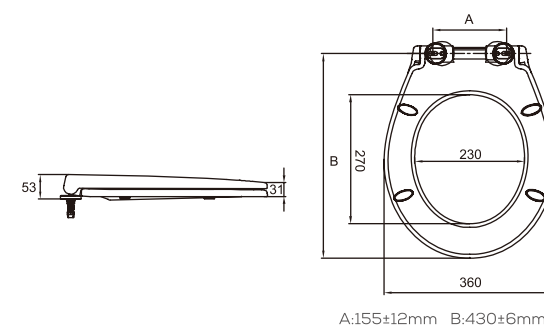
PRODUCT FEATURES

- PP Material, O Shape, 1.6kg
- Soft-close and Non soft-close function alternative
- One press button quick release hinge system
- Top/Bottom fixing installation alternative
- Applicable for European Standard O-shape ceramic bowl.



O-Shape

 NO.A630



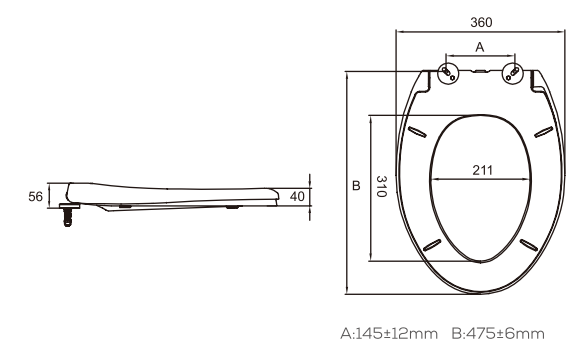
PRODUCT FEATURES

- PP Material, O Shape, 1.7kg
- Soft-close and Non soft-close function alternative
- No button 90 degree quick release hinge system
- Top/Bottom fixing installation alternative
- Applicable for European Standard O-shape ceramic bowl.



V-Shape

 NO.A606



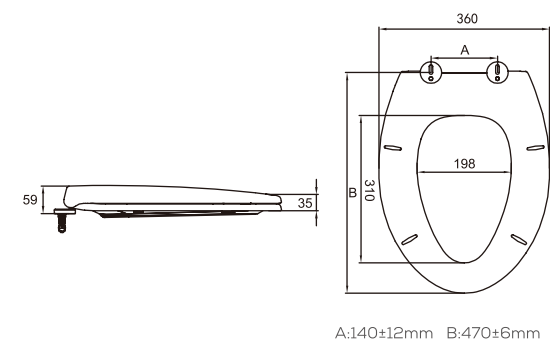
PRODUCT FEATURES

- PP Material, V Shape, 1.7kg
- Soft-close and Non soft-close function alternative
- One press button quick release hinge system
- Top/Bottom fixing installation alternative
- Applicable for American Elongated ceramic bowl





V-Shape

NO.A610

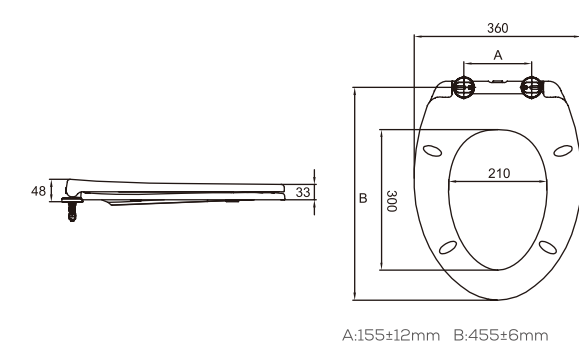


PRODUCT FEATURES


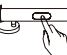
- PP Material, V Shape, 2.0kg
- Soft-close and Non soft-close function alternative 
- Two press button quick release hinge system 
- Top/Bottom fixing installation alternative
- Applicable for American Elongated ceramic bowl

V-Shape

NO.A623

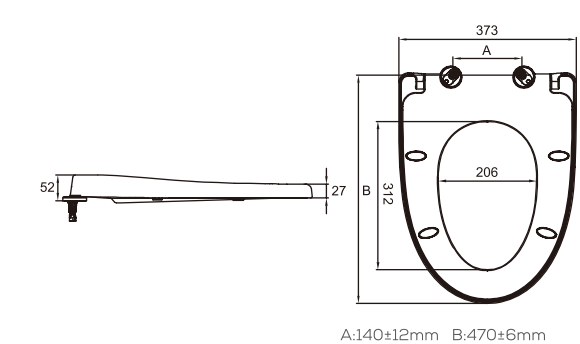


PRODUCT FEATURES



- PP Material, V Shape, 1.7kg
- Soft-close and Non soft-close function alternative 
- One press button quick release hinge system 
- Top/Bottom fixing installation alternative
- Applicable for American Elongated ceramic bowl

V-Shape

NO.A626

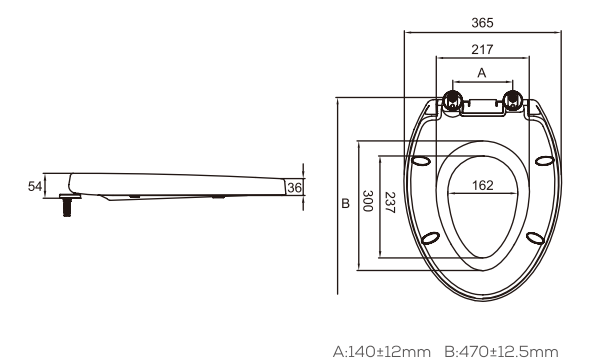


PRODUCT FEATURES



- PP Material, V Shape, 2.0kg
- Soft-close and Non soft-close function alternative 
- Two press button quick release hinge system 
- Top/Bottom fixing installation alternative
- Applicable for American Elongated ceramic bowl

V-Shape

NO.A631

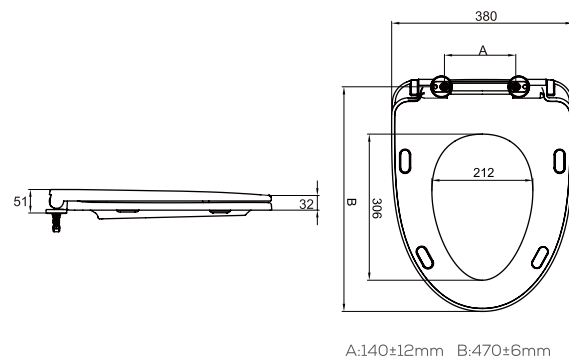


PRODUCT FEATURES

- PP Material, V-Shape, 2.3kg
- Soft-close and Non soft-close function alternative 
- No button 90 degree quick release 
- Top/Bottom fixing installation alternative
- Applicable for American Elongated ceramic bowl.

V-Shape

 NO.A643



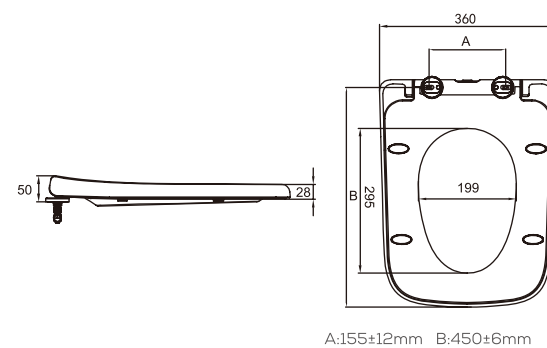
PRODUCT FEATURES

- PP Material, V Shape, 1.8kg
- Soft-close and Non soft-close function alternative
- Two press button quick release hinge system
- Top/Bottom fixing installation alternative
- Applicable for American Elongated ceramic bowl



Square Shape

 NO.A632



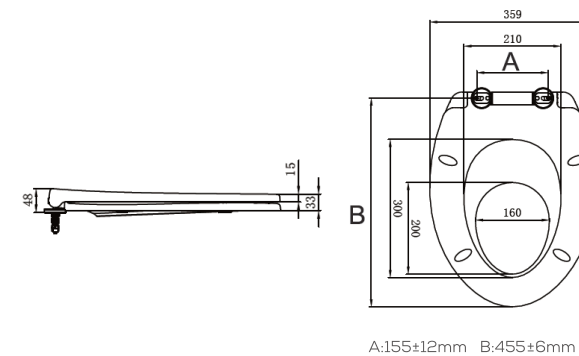
PRODUCT FEATURES

- PP Material, Square Shape, 1.9kg
- Soft-close and Non soft-close function alternative
- One press button quick release hinge system
- Top/Bottom fixing installation alternative



Family Baby Seat

 NO.A623B



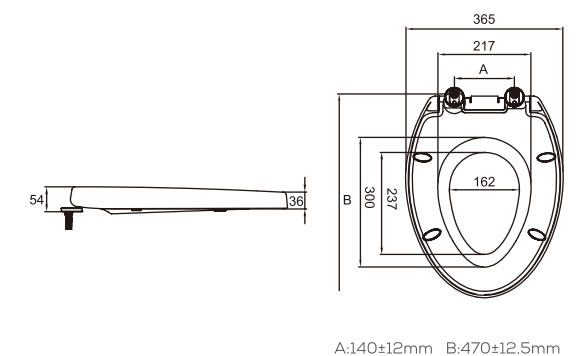
PRODUCT FEATURES

- PP Material, 2.05kg
- Soft-close and Non soft-close function alternative
- One press button quick release hinge system
- American Style V Shape, fits the American aesthetic standard.



Family Baby Seat

 NO.A631B



PRODUCT FEATURES

- PP Material, V-Shape, 2.3kg
- Soft-close and Non soft-close function alternative
- No button 90 degree quick release
- Top/Bottom fixing installation alternative
- Applicable for American Elongated ceramic bowl.



Manual Bidet

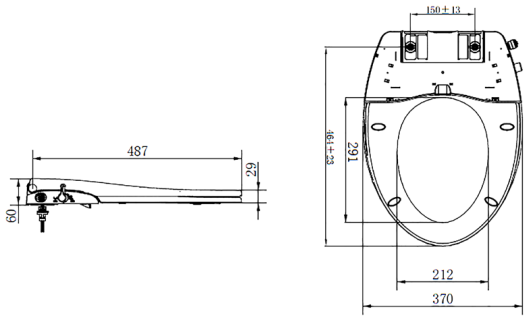


Manual Bidet

NO.A625



Quick release
Innovative S&C Separation Technology>>



PRODUCT FEATURES

- Lady/ rear washing with cold water, and the nozzle self-cleaning;
- Slim design, simple and concise appearance;
- Upward handle design, no possibility of interference ceramics, high adaptability to ceramics;
- Easy Top/Bottom fixing Installation and one press button quick release;
- Quick connection hose, easy to install.

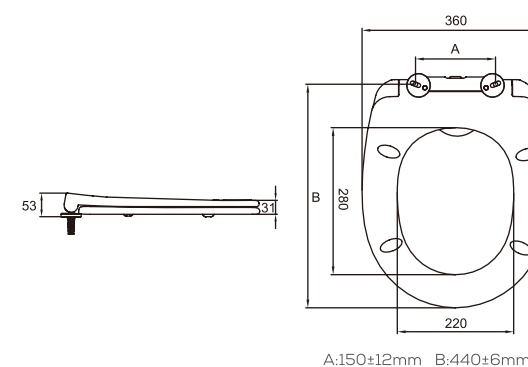
Innovations

Night Light Toilet Seat



Innovations

NO.A250A



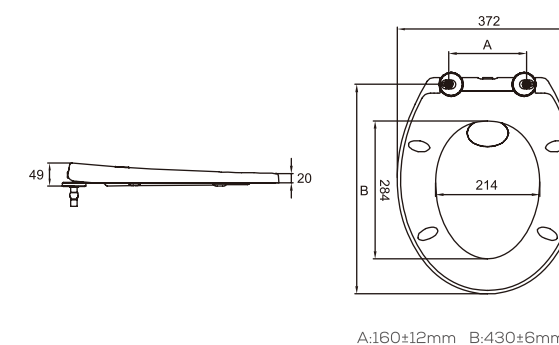
PRODUCT FEATURES

- UF Material, O-Shape, 2.2kg
- LED parameter:
Sound and light control
Two batteries(AAA)
Lifespan 6 months
- Soft-close and Non soft-close function alternative
- One press button quick release hinge system
- Top/Bottom fixing installation alternative
- Applicable for European Standard O-shape ceramic bowl.



Innovations

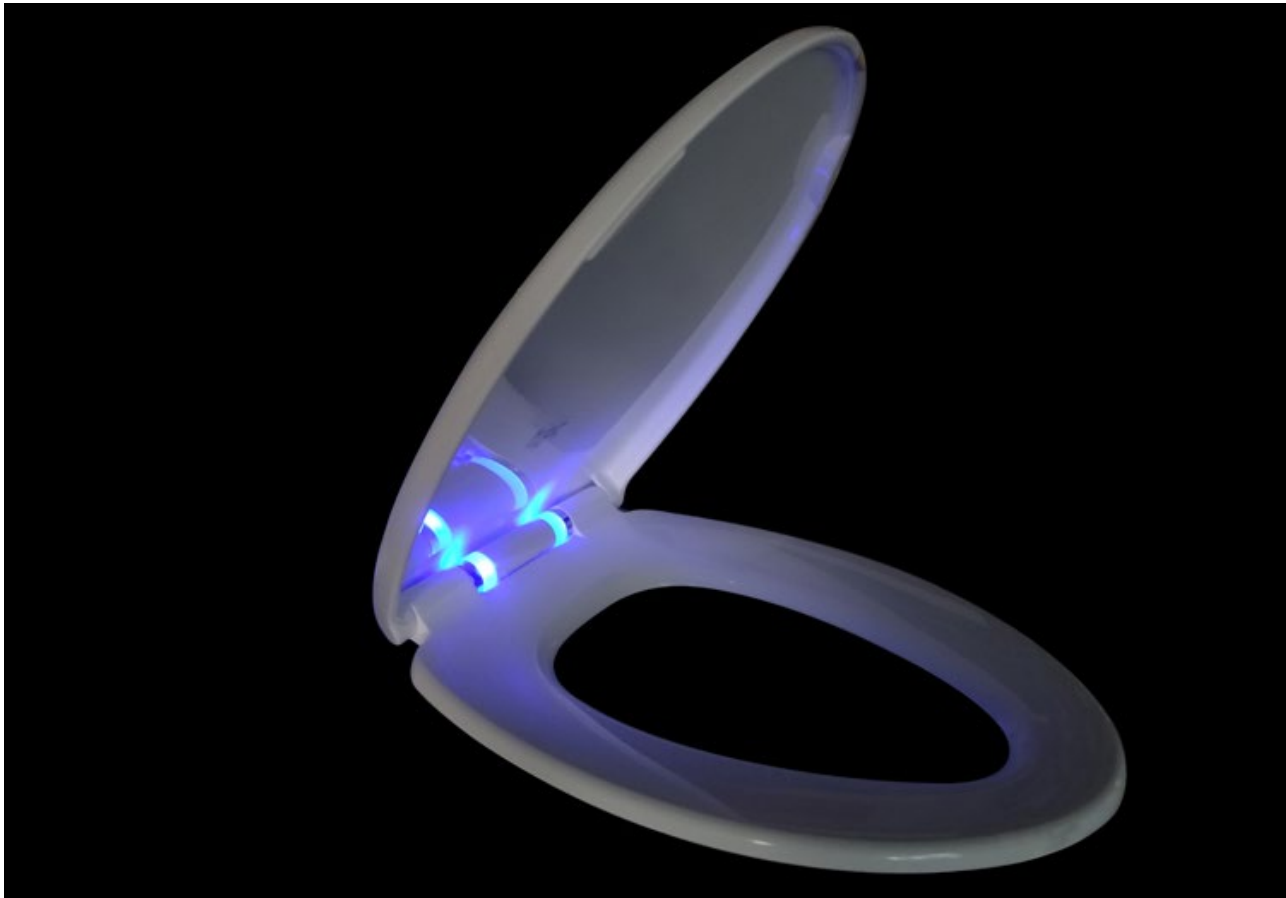
NO.A284A



PRODUCT FEATURES

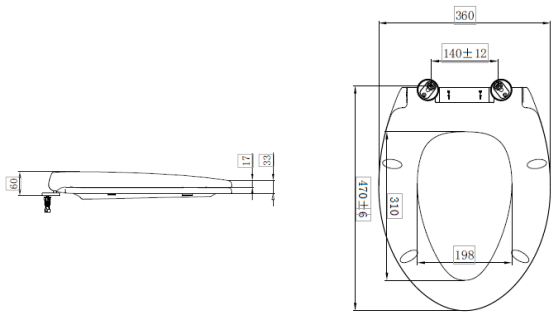
- UF Material, O-Shape, 2.1kg
- LED parameter:
Sound and light control
Two batteries(AAA)
Lifespan 6 months
- Soft-close and Non soft-close function alternative
- One press button quick release hinge system
- Top/Bottom fixing installation alternative
- Applicable for European Standard O-shape ceramic bowl.





Innovations

NO.A644A



PRODUCT FEATURES

- UF Material, V-Shape, 2.2kg
- LED parameter:
Sound and light control
Two batteries(AAA)
Lifespan 6 months
- Soft-close and Non soft-close function alternative
- One press button quick release hinge system
- Top/Bottom fixing installation alternative
- Applicable for European Standard V-shape ceramic bowl.



Aroma



Fast-slow Damper

Damper, the key part of the toilet seat. With our innovations on the damper, fast-slow close damper achieves the miracle closing speed, with 1 second falling to the 30 degrees, and then slow close below 30 degrees. Innovative and caring.



- FIRST to develop fast-slow close damper
- > 30°fast close-zero second
 - < 30°slow and silent close
 - Slow close:8-12s



Fingertip touch >>



Soft closing silently >>



Patented desing >>

New Material New Technique

We always focuse on doing the innovative toilet seats through material innovation as well as the manufacturing technique process. PBT material is a new developed material, which has very shiniy surface, high density, strong toughness, could not be scratched easily. With its strengths, you could get heavy hand feel, even holding a very slim toilet seat. Its superiors the current normal PP & UF material toilet seat.





New Technology: Dual Injection

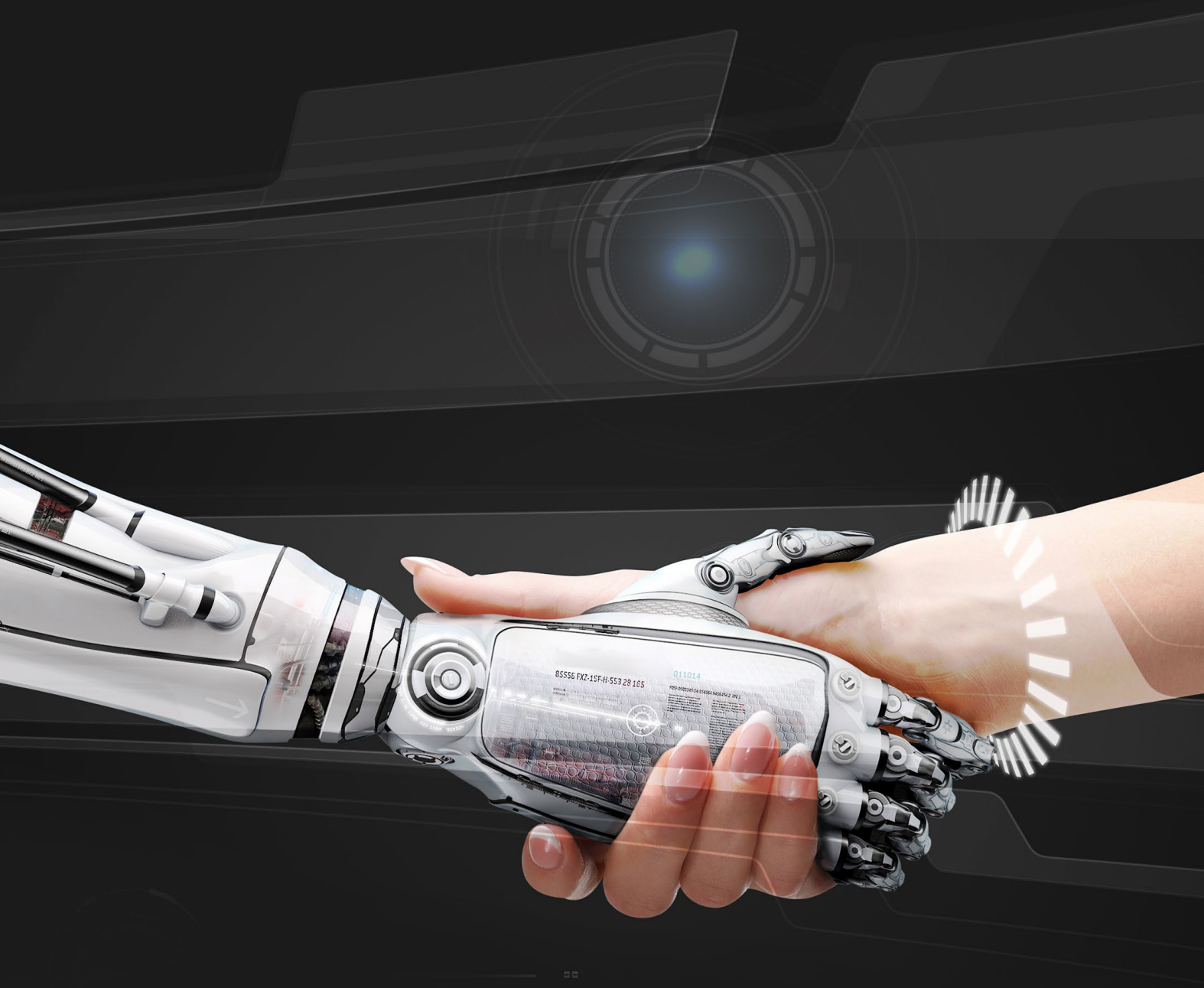
This elegant looking toilet is manufactured through dual injection process. We are the first one to use the automatic dual injection machines to develop and manufacture this toilet seat in the toilet seat industry.

The crystal looking toilet seat cover has got two layers, the first one is of PC material, and the second layer is of PC+ABS. The smart machine leads the production of this toilet seat production more smooth and efficient.



Hoti Quick Release Hinge System

One Button Press Hinge



Any Degree Quick Release



DPMAdirekt - elektronische Dokumentenannahme

Benachrichtigung über den Erhalt einer Patentanmeldung:

Dokumenten Referenz-Nr. (DRN): 2018082318553800DE
Anmeldung eingegangen am: 23.08.2018
Anmeldung erhalten von: CN=Dr.-Ing. Christian Lang,
C=de,
O=LangPatent Anwaltskanzlei IP Law Firm,
OU=LangPatent Anwaltskanzlei IP Law Firm,
E=mail@langpatent.com
Ihr Zeichen: P12881DE00
Digitale Signatur
Signaturniveau: fortgeschritten
gültig von: 28.11.2016 01:00:00
gültig bis: 29.11.2021 00:59:59
Eigentümer: CN=Gregor Rössling 51978
Seriennummer: 30239913943355786885532680200604481400
Herausgeber: O=European Patent Office,
CN=European Patent Office CA G2

Daten zum vorliegenden Vorgang:

Amliches Aktenzeichen: 10 2018 120 672 0
Barcode: 
Vorgangstyp: Patentanmeldung (DE)
Bestimmungsamt: DPMA
Titel der Patentanmeldung: ROTIERENDES UND SCHNELL ENTRIEGELBARES SCHARNIER UND
TOILETTENSITZ MIT EINEM SOLCHEN SCHARNIER
Anmelder: HOTI (XIAMEN) PLUMBING INC.
1F, No. 2 Building, No. 2002 Tongjizhong Road, Xike Zone, Tong'An District
361000 Xiamen, Fujian
CN



BREVET D'INVENTION
Code de la propriété intellectuelle - Livre VI
REQUETE EN DELIVRANCE

Numéro d'enregistrement : FR1870953
Lieu de dépôt : 92 INPI - Dépôt électronique
Date de la demande : 27/08/2018
Référence client : B25023FR
Type de demande : Brevet français

Rubrique 1 : NOM ET ADRESSE DU DEMANDEUR OU DU MANDATAIRE À QUI LA CORRESPONDANCE DOIT ÊTRE ADRESSÉE

Nom/Prénom : Monsieur Chaillot Denis
Société/Cabinet : Cabinet Chaillot
Téléphone : 0141192777
Fax : 0147858449
Email : dchaillot@chaillot.com
Adresse :
16/20, Avenue de l'Agent Sarre
B.P. 74
92703 Colombes Cedex
France

Rubrique 2 : TITRE DE L'INVENTION

Néant

Rubrique 3 : PRIORITÉS

N°	Pays ou Organisation	Date	Numéro
1	CN - Chine	13/04/2018	1810330215

Rubrique 4 - 1 : DEMANDEUR (Personne Morale)

Dénomination sociale : HOTI (XIAMEN) PLUMBING INC.
Forme juridique : Société organisée selon le droit chinois
Adresse :
1F, No. 2 Building, No. 2002 Tongjizhong Road, Xike Zone, Tong'An District, Xiamen
361000 Fujian
Chine



Electronic Filing Receipt

Mrs Ying Jiang
Golden Bough International Intellectual Property Ltd
100 Pall Mall
St James
London
SW1Y 5NQ

Your Ref: SW-973013 28 August 2018

PATENT APPLICATION NUMBER 1813899.0

We have received your request for grant of a patent and recorded its details as follows:

Filing date(*)	28 August 2018
Earliest priority date (if any)	13 April 2018
Applicant(s) / contact point	HOTI (XIAMEN) PLUMBING INC.
Application fee paid	Yes
Description (number of pages or reference)	9
Certified copy of referenced application	Not applicable
If description not filed	Not applicable
Claims (number of pages)	2
Drawings (number of pages)	10
Abstract (number of pages)	1
Statement of inventorship (Form 7)	Yes
Request for search (Form 6A)	Yes
Request for examination (Form 10)	Yes
Priority Documents	None
Other Attachments Received	Priority document
	Priority Assignment
	Fee Sheet
E-mail address	yingjiang@goldenboughip.com
Timestamp of Receipt	28 August 2018, 21:50
Received	/Intellectual Property Office, Newport/

Please quote the application number in the heading whenever you contact us about this application.

Intellectual Property Office is an operating name of the Patent Office

www.ipu.gov.uk

This quick release system has already got German France Britain patent.

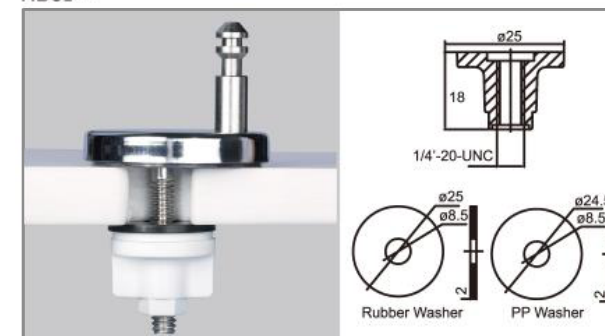
FOR QUALITY & SERVICE, WE DO



Hinge and Damper

Hinge & Fitting

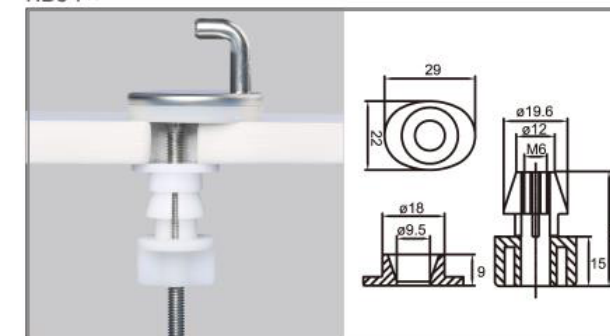
HB01 >>



PRODUCT APPLICATION

- Bottom Fixing
- Material: SUS Hinge, PP nut

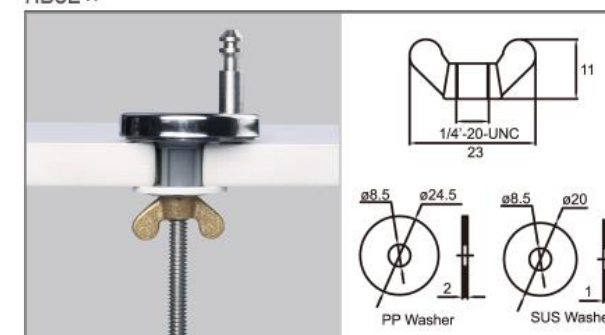
HB04 >>



PRODUCT APPLICATION

- Bottom Fixing
- Material: SUS Hinge, POM nut

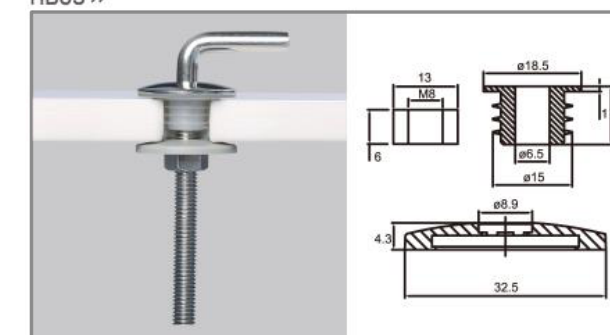
HB02 >>



PRODUCT APPLICATION

- Bottom Fixing
- Material: SUS Hinge, CU nut

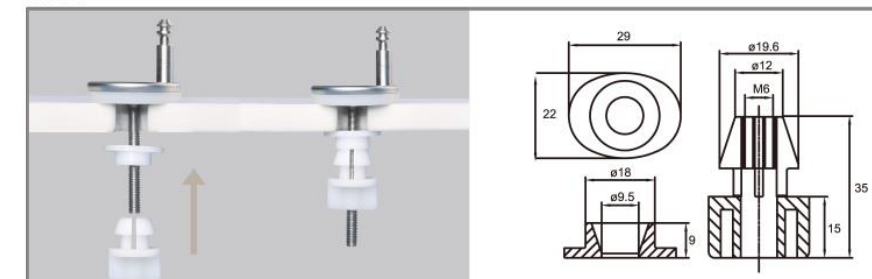
HB05 >>



PRODUCT APPLICATION

- Bottom Fixing
- Material: SUS Hinge, SUS nut

HB03 >>

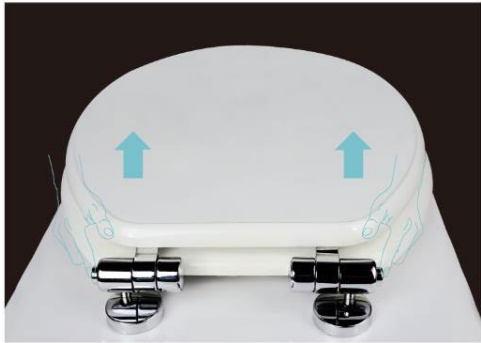


PRODUCT APPLICATION

- Bottom Fixing
- Material: SUS Hinge, POM nut



Zinc Alloy Hinge For Wooden Seat



PRODUCT APPLICATION

- Soft-close and Two press button quick release hinge system
- Rated torque:18K-40K
- Top/Bottom fixing installation alternative



HH005 >>

- Soft-close and Two press button quick release hinge system
- Rated torque:18K-40K
- Top/Bottom fixing installation alternative



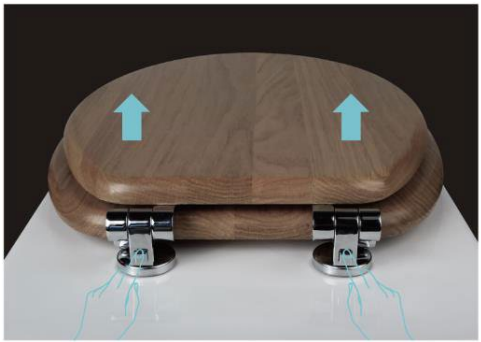
PRODUCT APPLICATION

- Soft-close and One press button quick release hinge system
- Rated torque:18K-40K
- Top/Bottom fixing installation alternative



HH010 >>

- Soft-close and One press button quick release hinge system
- Rated torque:18K-40K
- Top/Bottom fixing installation alternative



PRODUCT APPLICATION

- Soft-close and Two press button quick release hinge system
- Rated torque:18K-40K
- Top/Bottom fixing installation alternative

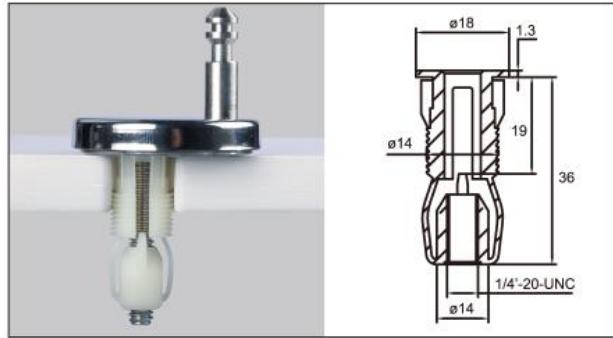


HH013 >>

- Soft-close and Two press button quick release hinge system
- Rated torque:18K-40K
- Top/Bottom fixing installation alternative

Hinge & Fitting

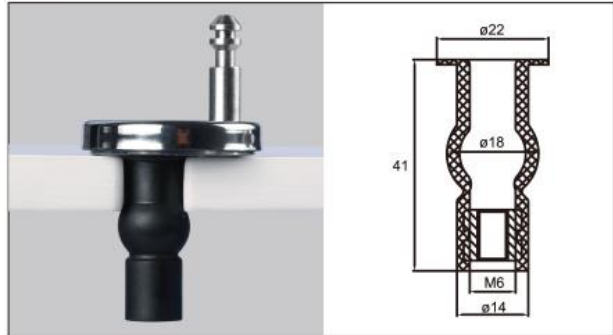
HT01 >>



PRODUCT APPLICATION

- Top Fixing
- Material: SUS Hinge, PA nut

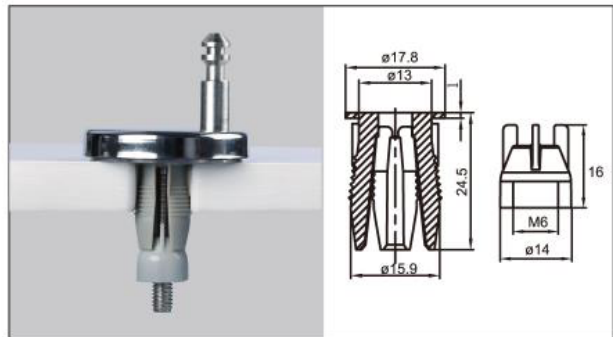
HT02 >>



PRODUCT APPLICATION

- Top Fixing
- Material: SUS Hinge, Rubber nut

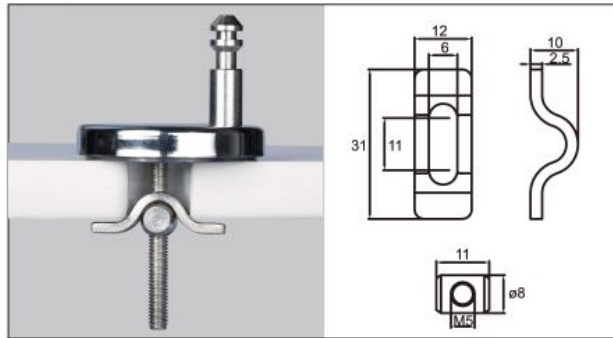
HT03 >>



PRODUCT APPLICATION

- Top Fixing
- Material: SUS Hinge, PA nut

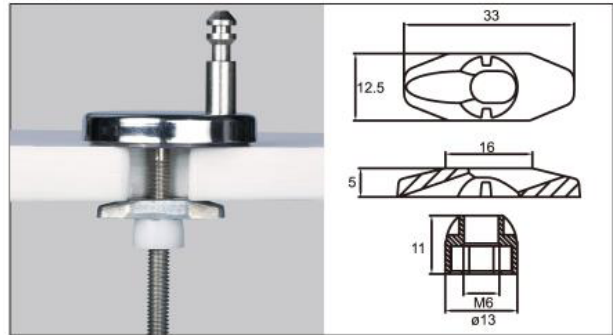
HT04 >>



PRODUCT APPLICATION

- Top Fixing
- Material: SUS Hinge, SUS nut

HT05 >>



PRODUCT APPLICATION

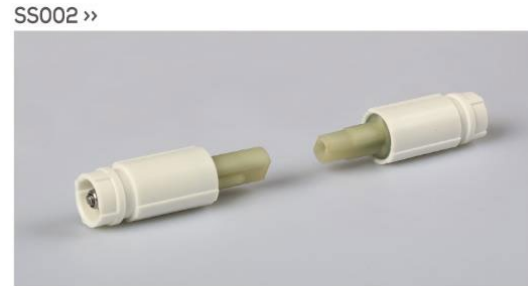
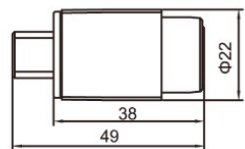
- Top Fixing
- Material: SUS Hinge, Zinc alloy nut

Slow closing damper



PRODUCT APPLICATION

- Rated torque:15K-40K



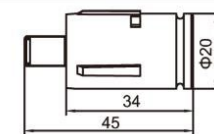
PRODUCT APPLICATION

- Rated torque:10K-25K



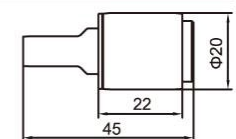
PRODUCT APPLICATION

- Rated torque:18K-40K



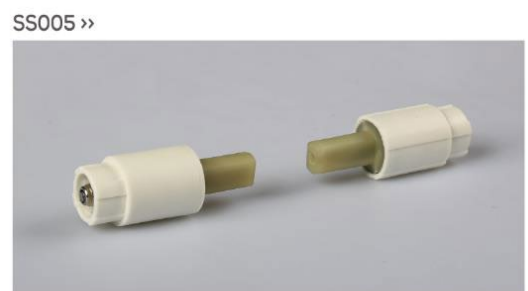
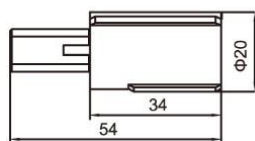
PRODUCT APPLICATION

- Rated torque:10K-30K



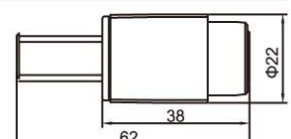
PRODUCT APPLICATION

- Rated torque:15K-35K



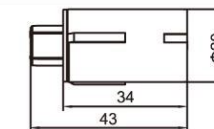
PRODUCT APPLICATION

- Rated torque:15K-40K



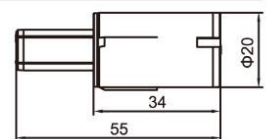
PRODUCT APPLICATION

- Rated torque:15K-35K



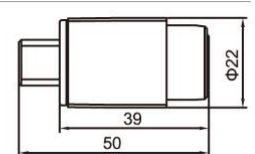
PRODUCT APPLICATION

- Rated torque:15K-35K



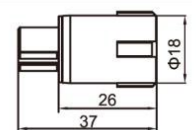
PRODUCT APPLICATION

- Rated torque:15K-40K



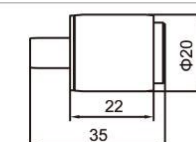
PRODUCT APPLICATION

- Rated torque:10K-25K



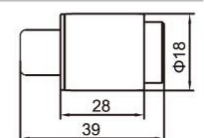
PRODUCT APPLICATION

- Rated torque:10K-30K



PRODUCT APPLICATION

- Rated torque:10K-30K



for quality & service, we do

